



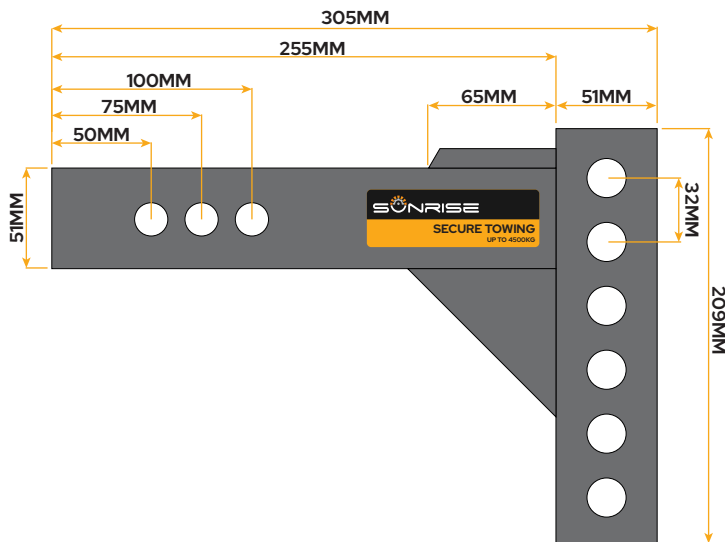
ABMP70HD

# ADJUSTABLE TOW BAR BALL MOUNT SUIT 50MM & 70MM BALL



## FEATURES

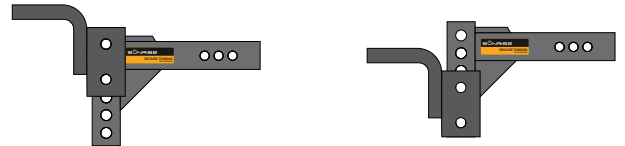
- Heavy-duty 4500kg rating for serious towing
- 450kg tongue weight capacity for high-load stability
- ADR 62/02 compliant for Australian road use
- Fits 50 × 50mm receivers for broad vehicle compatibility
- Multi-pin adjustable shank for flexible setup
- Up to 210mm drop or 188mm rise in 32mm steps
- Three shank lengths: 315mm, 340mm, 365mm
- Suits 50mm & 70mm tow balls
- 22mm or 32mm hole size, reducing bush included
- Solid steel construction for maximum strength
- 25 × 75mm heavy-duty ball platform
- High-tensile 3/4" bolts & washers for secure mounting



SHANK DIMENSIONS



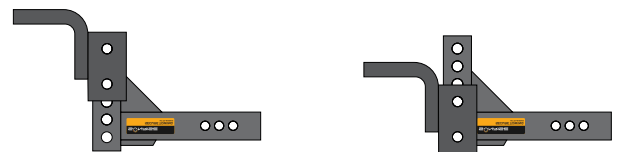
POSITION 1: 115MM DROP - 147MM DROP - 179MM DROP - 210MM DROP



POSITION 2: 80MM RISE - 48MM RISE - 16MM RISE - 16MM DROP



POSITION 3: 4MM DROP - 36MM DROP - 68MM DROP - 100MM DROP



POSITION 4: 92MM RISE - 124MM RISE - 156MM RISE - 188MM RISE

PLEASE ENSURE THAT THE INSTALLATION INSTRUCTIONS ARE READ BEFORE USING THIS PRODUCT



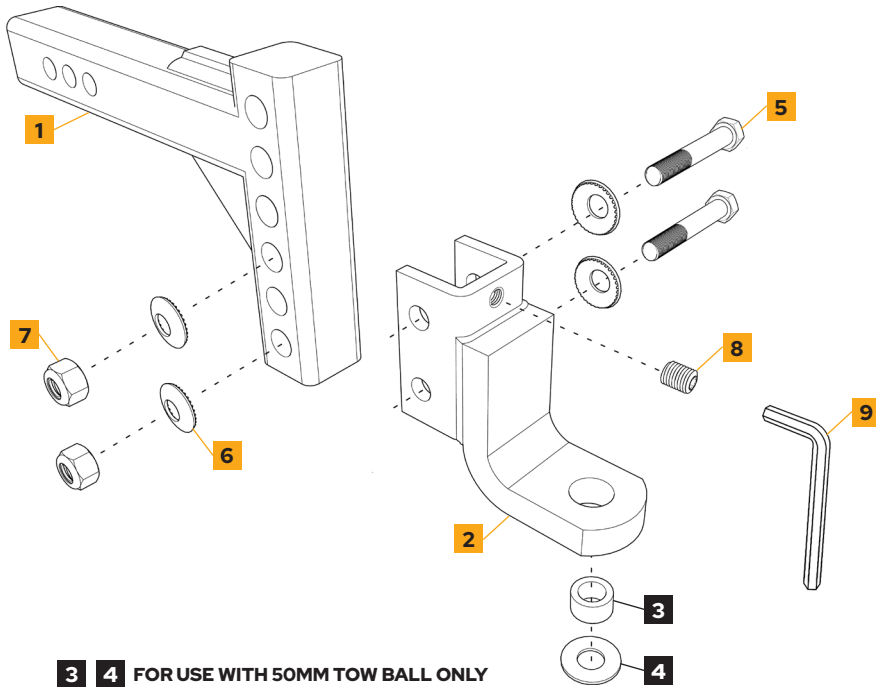
03 9794 0415

sales@sunriseint.com.au



VISIT OUR SITE

sunriseint.com.au



PARTS LIST		
PART #	PART DESCRIPTION	QTY
1	SOLID RISE/DROP SHANK	1
2	BALL MOUNT PLATFORM	1
3	1-1/4" TO 7/8" TOW BALL REDUCING BUSH	1
4	TOW BALL REDUCING BUSH WASHER	1
5	3/4-10 X 5" BOLT	2
6	3/4" CONICAL TOOTHED WASHER	4
7	3/4" NYLOC NUT	2
8	5/8"-11 X 3/4" HEX SOCKET GRUB SCREW	1
9	ALLEN / HEX KEY FOR GRUB SCREW	1
10	INSTRUCTION MANUAL	1

**3 4** FOR USE WITH 50MM TOW BALL ONLY

## INSTALLATION INSTRUCTION

1. Insert the shank (1) into the tow bar receiver and secure it using a hitch pin (not included).
2. Position the ball platform (2) at the desired height and align its bolt holes with the shank holes.
3. Install the 3/4" bolts (5) with conical washers (6) and nuts (7) as shown in the diagram. Do not fully tighten at this stage.
4. Insert the anti-rattle Allen/Hex head screw (8) into the ball platform and tighten it against the shank using the supplied Allen/Hex key. Do not over-tighten.
5. Tighten both 3/4" bolts evenly to 339Nm (250 ft-lbs).
6. When fitting a 50mm tow ball (7/8" shank), install the reducing bush (3) and washer (4) as shown.  
*Note: The reducing bush and washer are not required when using a 70mm tow ball.*

## MAINTENANCE

1. Regularly inspect the tow ball mount during use for signs of damage, looseness, or abnormal wear. Ensure the tow ball and all fasteners remain securely tightened.
2. Periodically apply a quality rust-inhibiting spray to all hitch components, particularly if the product is used in coastal areas or exposed to salt spray.

## WARNING

The maximum towing capacity is limited by the lowest-rated component of your towing system, including the vehicle's rated towing capacity, tow bar, hitch, or tow ball. Always ensure all components meet or exceed the required load rating.

**PLEASE ENSURE THAT THE INSTALLATION INSTRUCTIONS ARE READ BEFORE USING THIS PRODUCT**



03 9794 0415

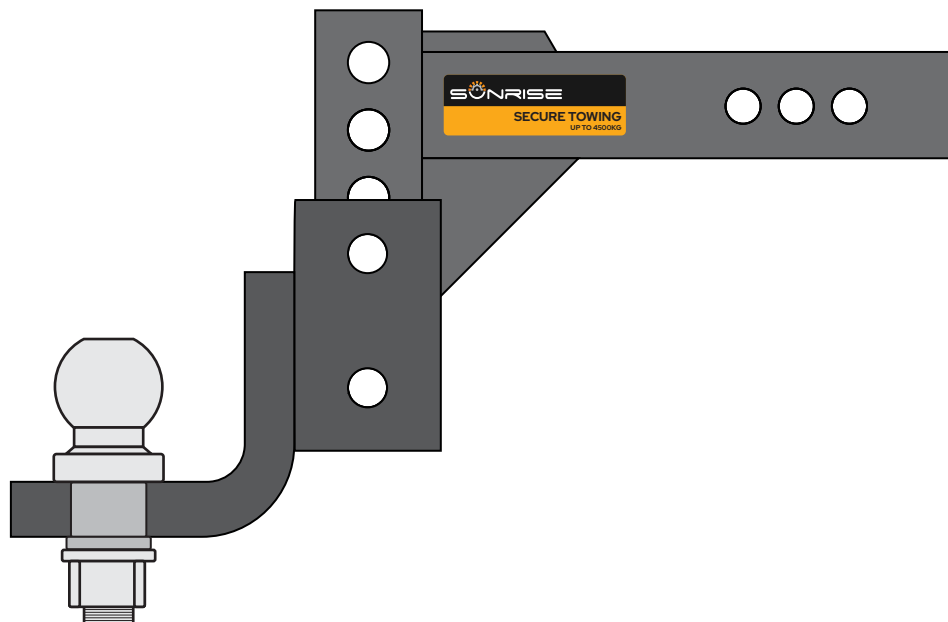


sales@sunriseint.com.au

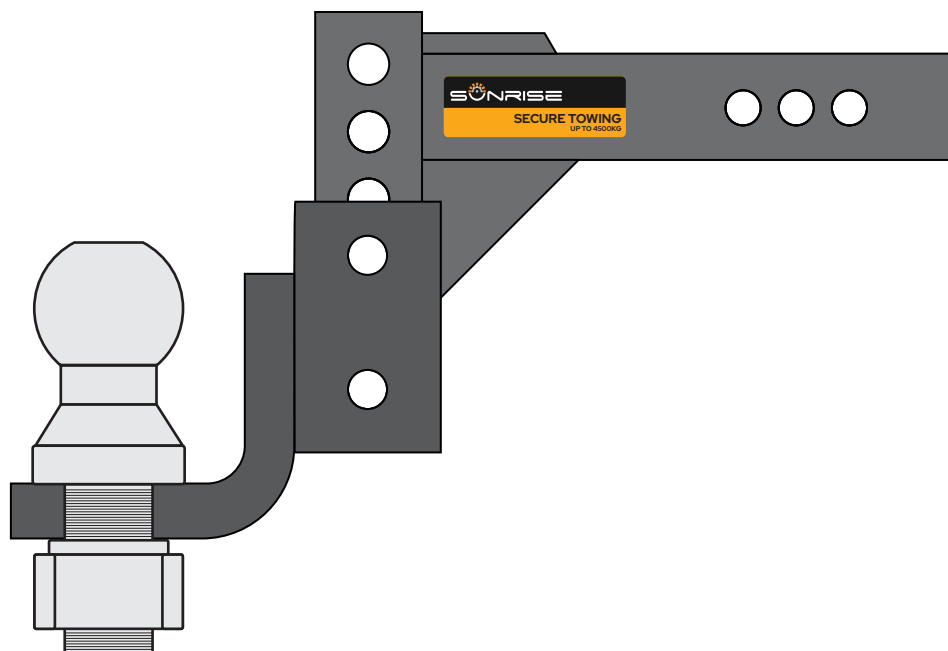


VISIT OUR SITE

sunriseint.com.au



SUIT: 50MM TOWBALL WITH REDUCING BUSH



SUIT: 70MM TOWBALL

PLEASE ENSURE THAT THE INSTALLATION INSTRUCTIONS ARE READ BEFORE USING THIS PRODUCT



03 9794 0415

[sales@sunriseint.com.au](mailto:sales@sunriseint.com.au)



VISIT OUR SITE

[sunriseint.com.au](http://sunriseint.com.au)