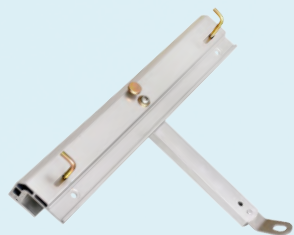


AUSTLIFT ROOF KIT

ROOF KITS are designed to provide a simple, secure temporary safety line on pitched roofs. All they require is a secure anchor point and a roof ridge-line above where the user will work. There are several ways to create a safe anchor point for your rope, such as attaching a sling to an existing solid structure or using an Austlift Temporary Roof Anchor or Ground Anchor. Always ensure the anchor point is on the opposite side of the roof from where you wish to work, and always follow instructions supplied with your equipment.

A: Suitable Anchor Point



Prime Edge Anchor:
Aluminium Alloy & Stainless Steel
MBS: 15kN / Weight: 3kg



Core Edge Anchor:
Galvanized Steel / MBS: 15kN
Light weight: 1.5kg



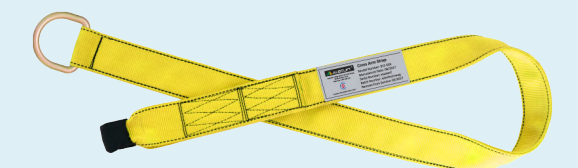
Flat Bar Anchor:
Galvanized Steel / MBS: 15kN
Light weight: 1.5kg



Anchor Sling:
50mm wide x 1.5M long
Rated Load: 2.45T



Cross Arm Strap (short):
44mm wide x 0.5M long



Cross Arm Strap (long):
44mm wide x 1.2M long
D-ring at one end and textile loop at the other end

B: Body Support – Suitable harness to arrest a fall or work in restraint



Tradesman Harnesses : with large upright dorsal d-ring and front chest loops, shoulder, chest and leg straps.

Large Upright Dorsal D-ring:
• Material: Alloy Steel
• MBS: 23kN
• Process: forged
• Proof load tested

Connection and Buckles:
• Material: alloy steel
• MBS: 15kN
• Process: stamped
44mm-wide Polyester webbing

C = Connector – Suitable rope and rope grab system to allow you to be able to connector to the anchor point and prevent a fall by reducing fall distance and allowing you to work in restraint.

Fall Arrester: 12mm x 15M kernmantle rope with rope grab and shock pack attached. Triple action karabiner one end and abrasion resistant thimble termination, stop knot on other end.

Kernmantle Rope: Size: 12mm dia, 15M long / End: Loop with a abrasion resistant thimble & stop knot / Feature: Clear protective sleeve

Triple Action Karabiner: Alloy steel / Gate opening: 22mm / MBS: 40kN

Rope Grab: Alloy Steel / MBS: 15kN

Screw Turn-locking Karabiner: Alloy steel / Gate opening: 18mm / MBS: 25kN

Shock Pack: Size: 44mm wide, 1.5M long / Rated load: 2.45T



ANCHOR POINT CONNECTION INSTRUCTIONS

Anchor Point Using Temporary Roof Anchor

1. Remove row of four roof fixing and position anchor on roof so holes are aligned.
2. Fix Anchor to roof with approved screw through existing holes.
3. Fix rope to anchor point using supplied karabiner.
4. Using the bagged ropes as a throw dolly, throw bag over roof.
5. Attach chest connector to harness and rope grab before you leave the ground.
6. Always work from a position where your anchor points are above you, keep lanyards attached to rope grab shorter than 450mm.

Anchor Point Using Endless Sling

1. Locate a suitable object such as a sturdy tree, the wheel or axle of a car or truck, or a large, concreted fence post.
2. Loop sling around object and back through itself.
3. Refer to instruction manual supplied with roffing kit for specific safety and best practice instructions.

All Austlift Ropes and Rope Grab combinations are tested and certified to the relevant AS/NZS 1891 standard.